

PROGRAMMATIK

The firm kg eiland - founded in 1998 - has two primary levels: they don't just show here beautiful pictures – as a starting point, but they also communicate them in their natural background.

A background that is here really understood like the one surrounding the artists. Like the japan ukiyo-e, the pictures of the flowing world, these works show often – in spite of their different formal approach – a change from the “individual” into the “general”, until the “universal”.

The Group has confidence in autodidactic structures and – in its first shows - also uses a skilled public, to prove here the imaginary approach. Both the production and the show of the works take place in argument as well with the presence as with the history of Society, Culture and – in particular – of the fine Arts. The three members think that an expert eye is the fundamental premise of quality's steadiness in meaning and form: this requires an aesthetics which unites form and colour to inject a dynamic and an edge into the subject of the picture. And this is visible for everyone in the meaning of some Romance and in the ability to adopt on the other side a point of view.

Hitherto, the k g e i l a n d has shown its pictures in many metropolis in complex expositions that – during the opening evening – always tried to show both a visual experienced intention (through the shown pictures) and to grip the remaining meaning. An example is here the idea of the so-called general artistic works of Kurt Schwitters but also Ilya Kabakov's pictures of interior: examples that have to bring the observer not just to the simple show, but to a real experience and observation with no space for the simple consume. Although the visitor comes back home with no material work with him, he returns to his life with one of „these“ pictures and consumes it in his own world.

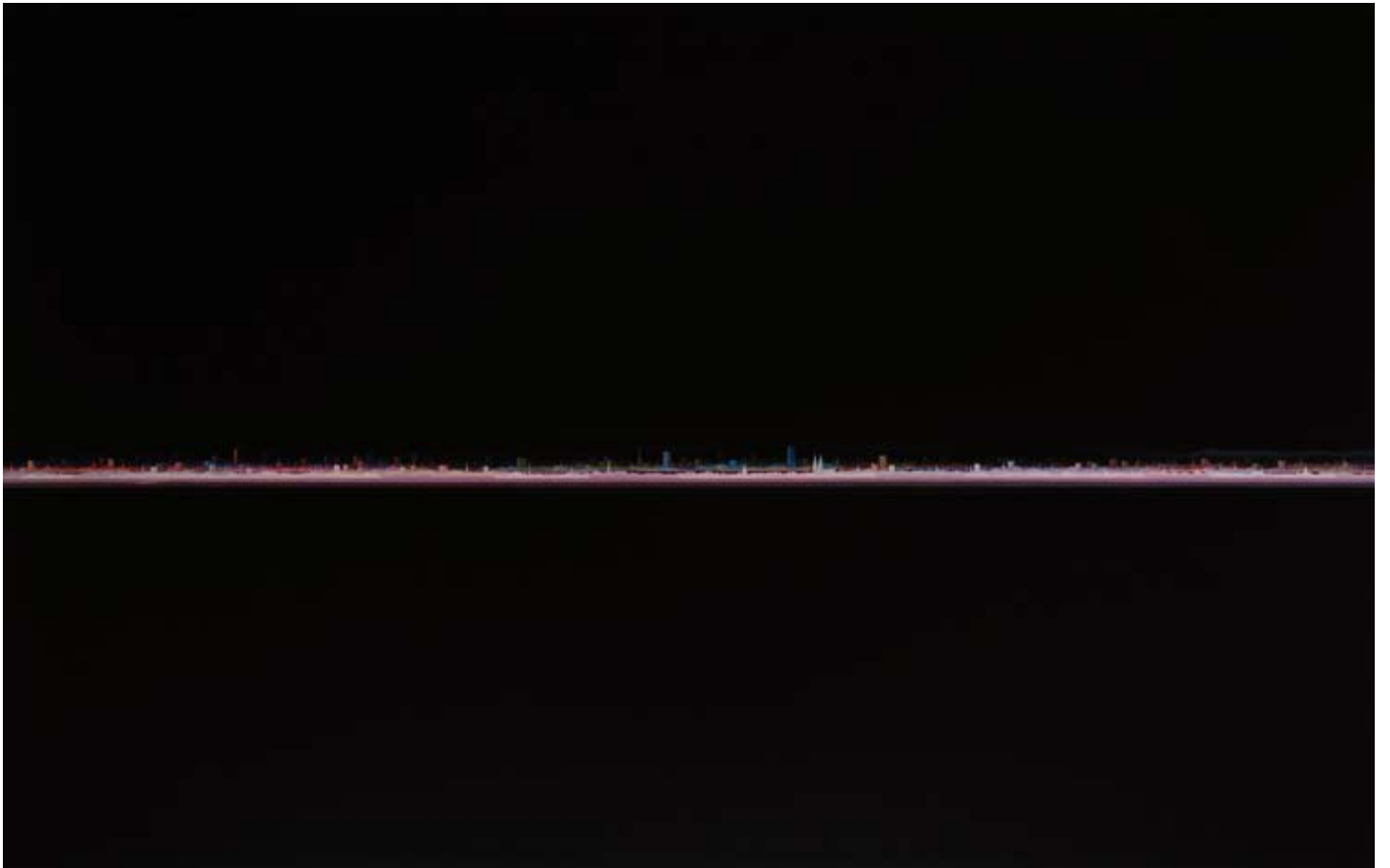
PETER RUEHLE



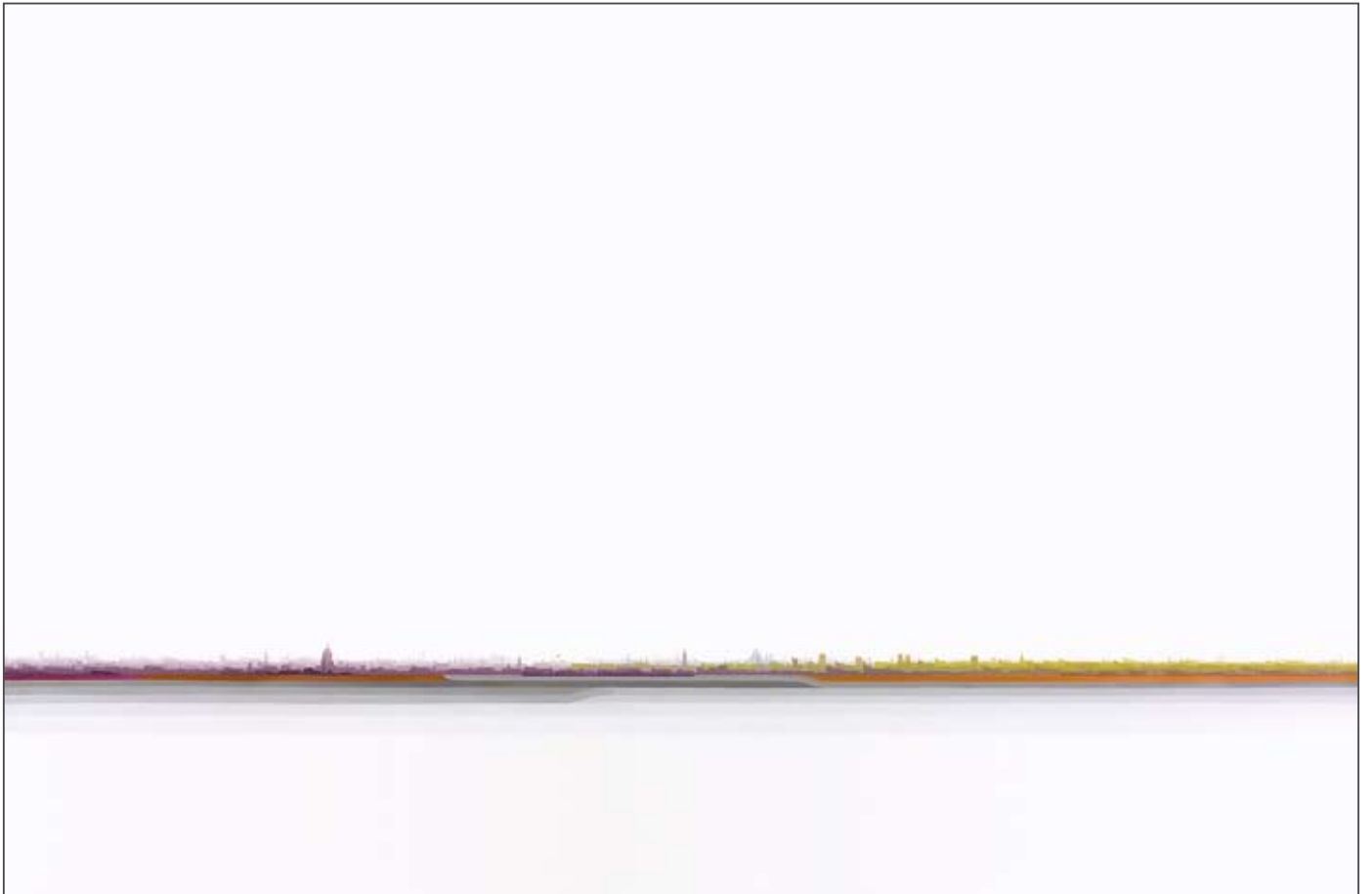
Genève, 2006, oil on wood, 100 x 180 cm



Bangkok, 2006, oil on wood, 100 x 180 cm



Basel reverse, 2008, oil on wood, 111 x 173 cm



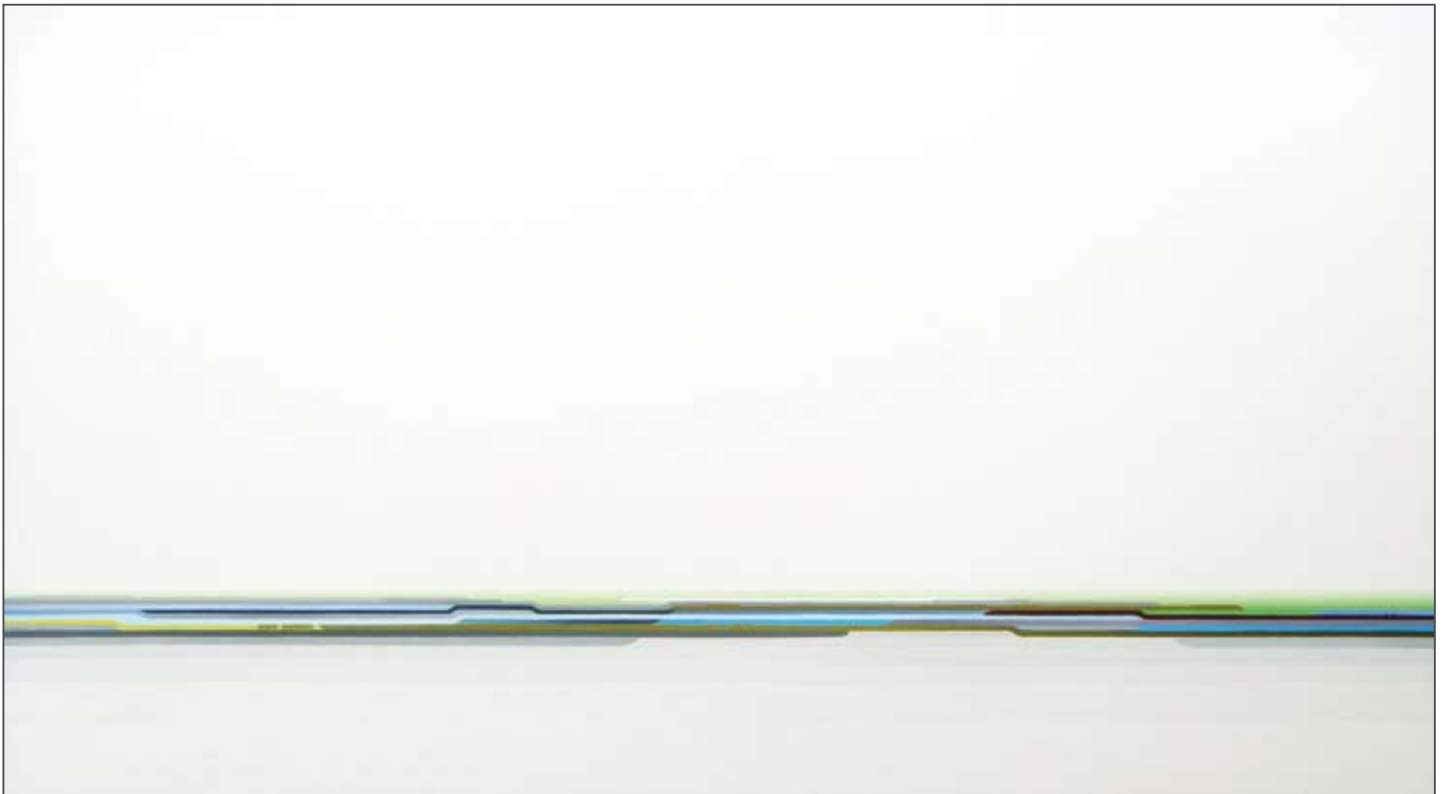
Bruxelles, 2007, oil on canvas, 100 x 150 cm



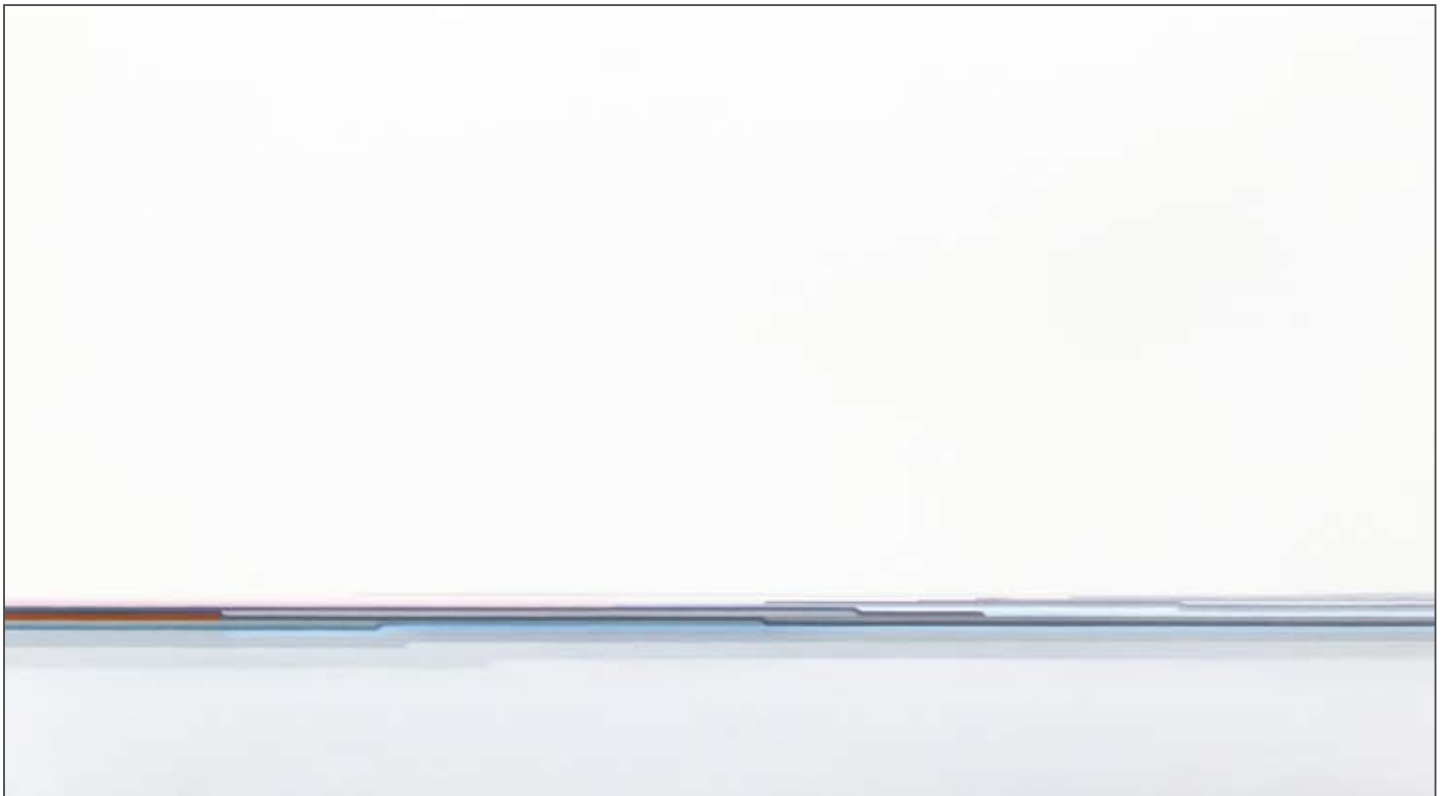
Air 8, 2005, oil on wood, 100 x 150 cm



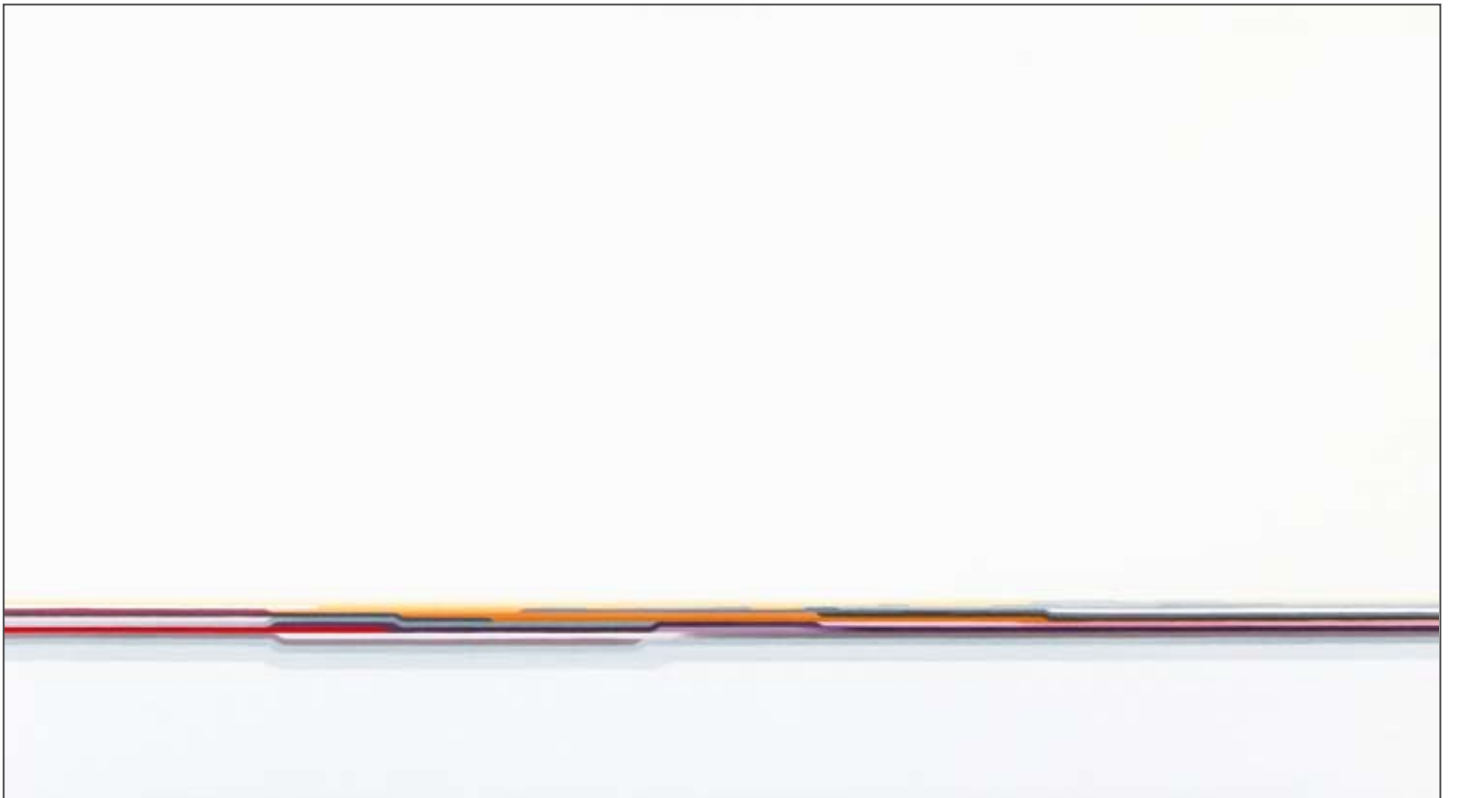
Kosmos 4, 2005, oil on wood, 180 x 120 cm



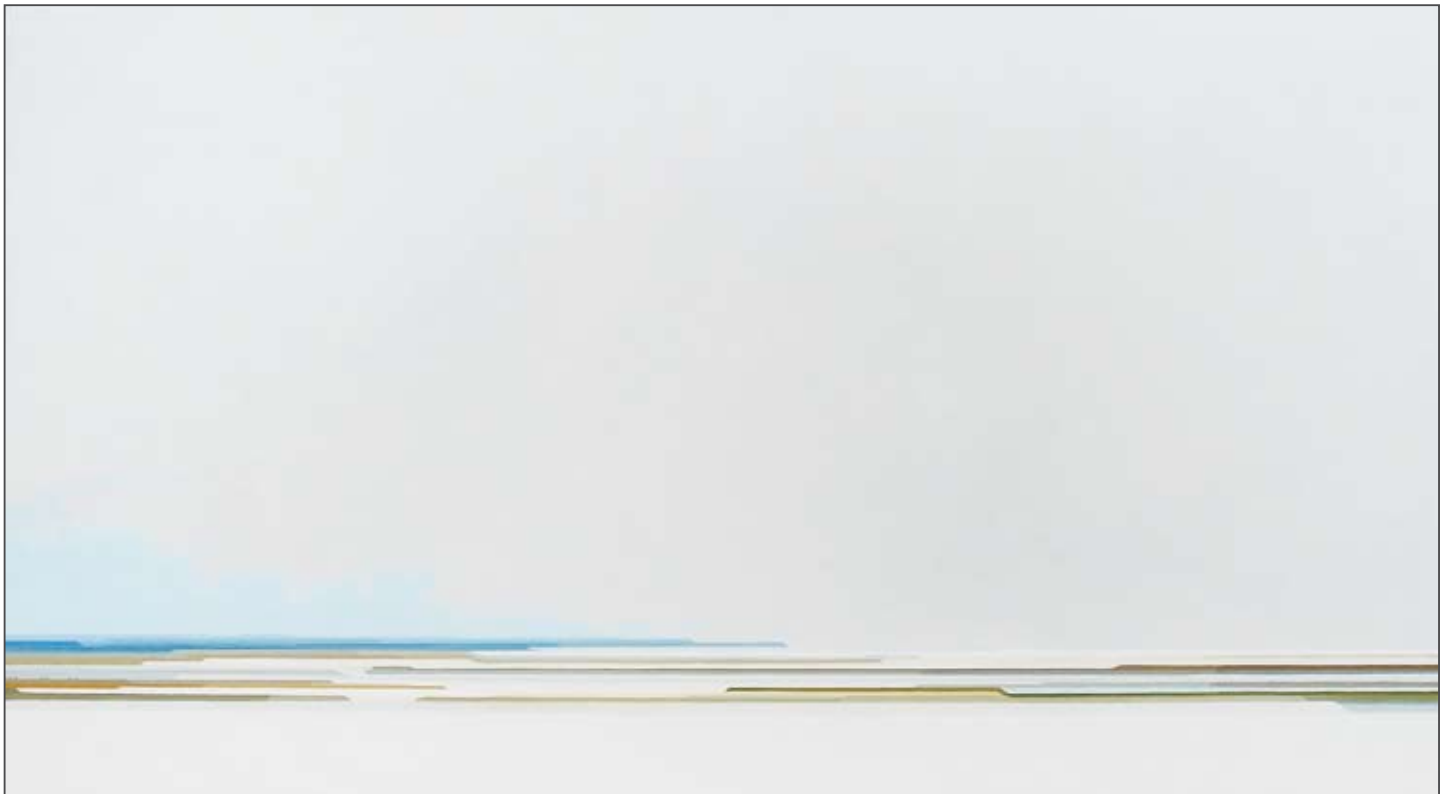
Universallandschaft 8, 2006-2009, oil on wood, 100 x 180 cm



Reduzierte Universallandschaft 4, 2006-2009, oil on wood, 100 x 180 cm



Universallandschaft 6, 2006-2008, oil on wood, 100 x 180 cm



Uckermark im Schnee, 2005, oil on wood, 100 x 180 cm

PETER RUEHLE

Peter Ruehle's work is dealing with the contemporary world joining and in connection with history. The cityscapes are gentle contemplations and reflections of social structures and their coherencies and correlations with e.g. architecture in former times or the perspectives in the future - as well as the new developing mixed-media-collages.

*1975 born in Dresden

*1995 bis 2004 university studies in Dresden, Giessen and Florence

*2007 Prize Neue Darmstädter Sezession

*lives and works in Berlin

SOLO EXHIBITIONS (selected)

- 2010 Greifswald / strip / Galerie Hubert Schwarz
Berlin / electric studio with Torsten Ruehle / studio zimmerstr. 90/91
Berlin / italia / Italian Embassy
Berlin / Neue Räume with Torsten Ruehle / Galerie Kai Hilgemann
- 2009 Darmstadt / Preisträgerausstellung der Darmstädter Sezession / Mathildenhöhe
Berlin / brand / Galerie Kai Hilgemann
- 2008 Frankfurt am Main / universal / Kunstraum Bernusstraße
- 2007 Berlin / international / Galerie Kai Hilgemann
Greifswald / zeroville / Galerie Hubert Schwarz
- 2006 Berlin / alphaville / Galerie Kai Hilgemann
Dresden / alphaville / blitzgalerie
- 2004 Meissen / Neue Sinnlichkeit / Stadtgalerie, Kunstverein
- 2003 Dresden / offen / galerie oran
- 2002 Dresden / ölastiks with Carlo Crovato / galerie oran
Florenz / peter ruehle / zoe

GROUP EXHIBITIONS (selected)

- 2010 Lissone / premio lissone 2010 / museo d'arte contemporanea
Berlin / berliner blau / Galerie Kai Hilgemann
- 2009 Halle/Saale / Große Kunstausstellung Halle / Villa Kobe
Berlin / stock exchange / Galerie Kai Hilgemann
- 2008 Gera / Landschaftsbilder aus der Sammlung Rusche / Kunstsammlung Gera, Orangerie
Andratx, Mallorca / flow / centro cultural andratx
Wien / kg eiland / p.p.s.
Augsburg / new talents / Kunstmuseum Walter, Galerie Noah
Darmstadt / Stadtbilder heute / Galerie Netuschil
- 2007 Göttingen / kg eiland / Kunstverein Apex
Peking / gallery kasten germany at beijing 798 / bb gallery
Darmstadt / standort 2007 / Neue Darmstädter Sezession, Mathildenhöhe
Rom / kg eiland / Deutsche Botschaft, studio marzi
Schwedt / kg eiland / Kunstverein Schwedt
Marburg / Landschaft / Galerie Michael Schmalfluss
Chemnitz / kg eiland / Galerie Weise
- 2006 Berlin / boulevART / Kunstherbst Berlin
Mannheim / kg eiland / Galerie Kasten
- 2005 Berlin / kg eiland / Backfabrik
- 2004 Wien / kg eiland: ostblockbuster / Projekt Galerie Lang Wien
Chemnitz / eiland / Galerie Weise
- 2003 Berlin / economy and ecstasy / Raab Galerie
- 2002 Trient / la luna grassa sogghinante / centro polifunzionale

CATALOGUES

2008 gebr.ruehle: clear / 96 pages / texts by Hugo Ball, Emil Otto Nardorff

2007 peter ruehle: international / 78 pages / texts by Friedrich W. Kasten, Emil Otto Nardorff

2005 peter ruehle: malerei / 68 pages / texts by Torsten König

2003 kg eiland / 128 pages / texts by Dietmar Moews, Patrick-Daniel Baer, kg eiland

2002 visualia / 48 pages

COLLECTIONS (selected)

Deutscher Bundestag, Berlin

Staatliche Kunstsammlungen Dresden, Kunstfonds des Freistaates Sachsen

Italian Embassy in Berlin

Sparkasse Karlsruhe

HSH Nordbank, Hamburg

Ernst&Young, Mannheim

FischerAppelt, Frankfurt/Main

Soer Collection Rusche, Oelde, Berlin

FSF, Berlin

SchwenkeSchütz, Berlin

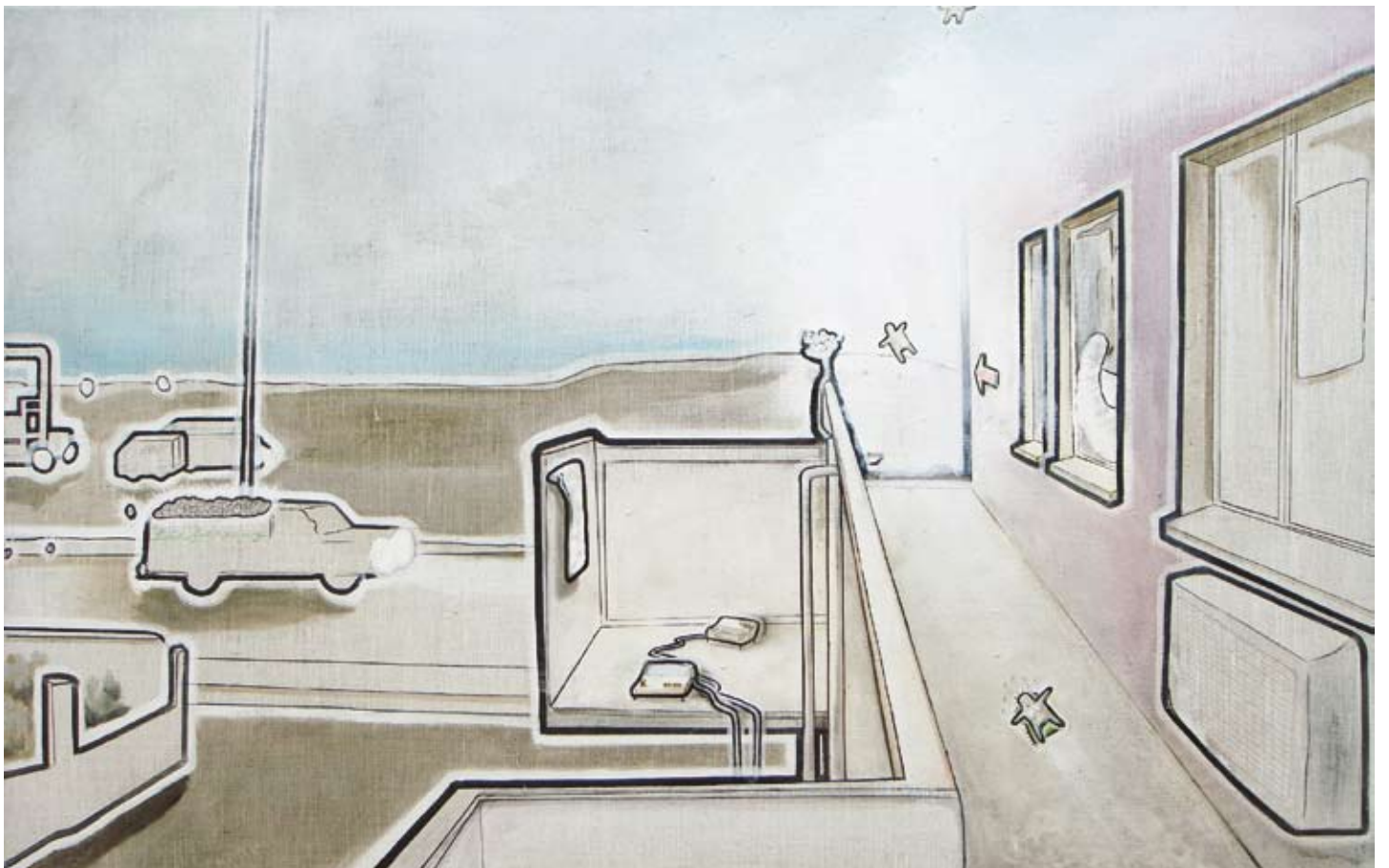
TORSTEN RUEHLE



Zeit, 2009, oil and pigment pen on canvas, 210 x 330 cm



Masse, 2009, oil and pigment pen on canvas, 330 x 210 cm



Geregelte Lieferung, 2009, oil and pigment pen on canvas, 85 x 135 cm



Mann ohne Vergangenheit, 2006, oil and pigment pen on canvas, 96 x 146 cm



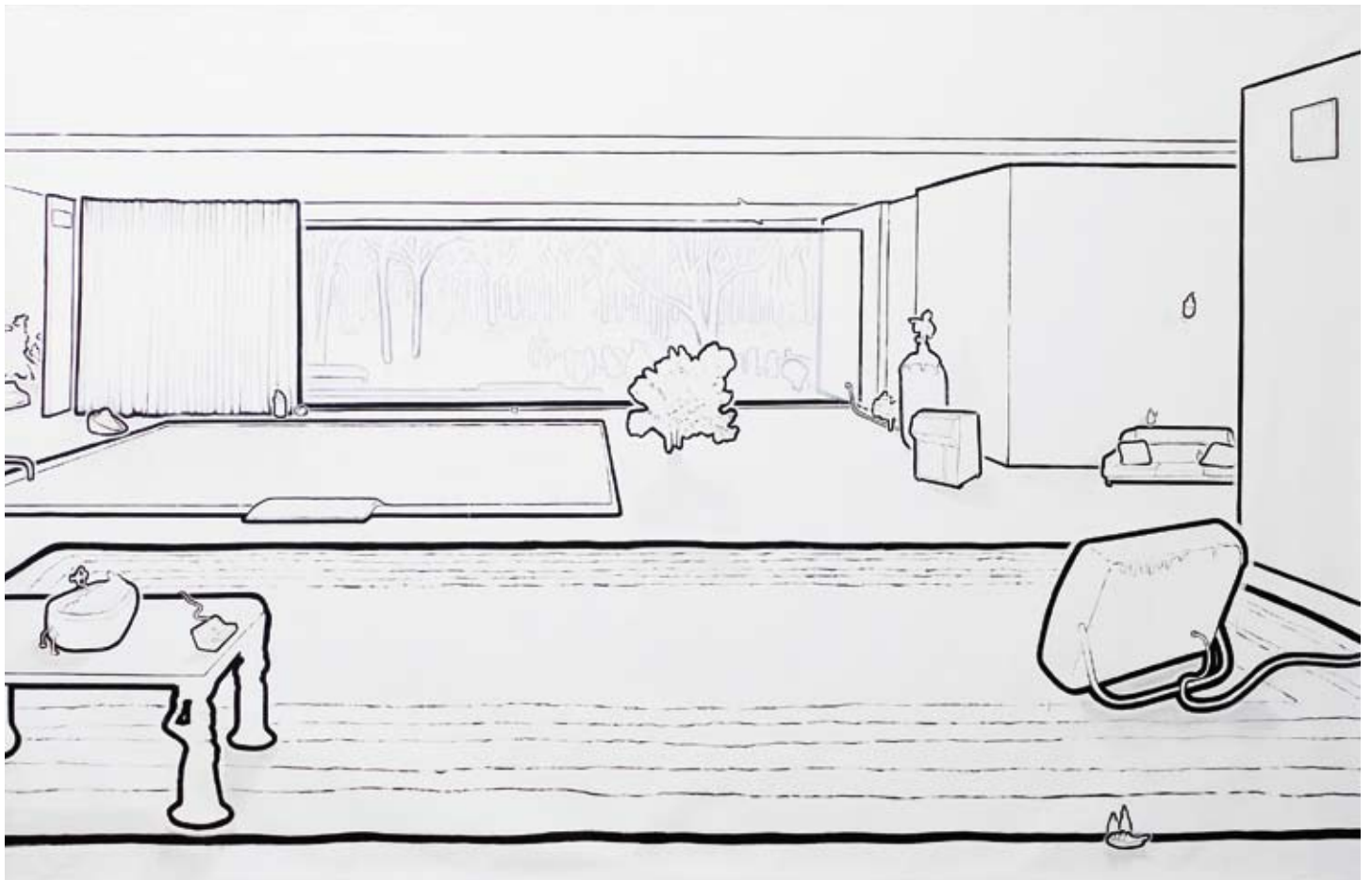
Die fliegende Moderne, 2008, oil and pigment pen on canvas, 60 x 210 cm



Lied von Babylon, 2006, oil and pigment pen on canvas, 96 x 146 cm



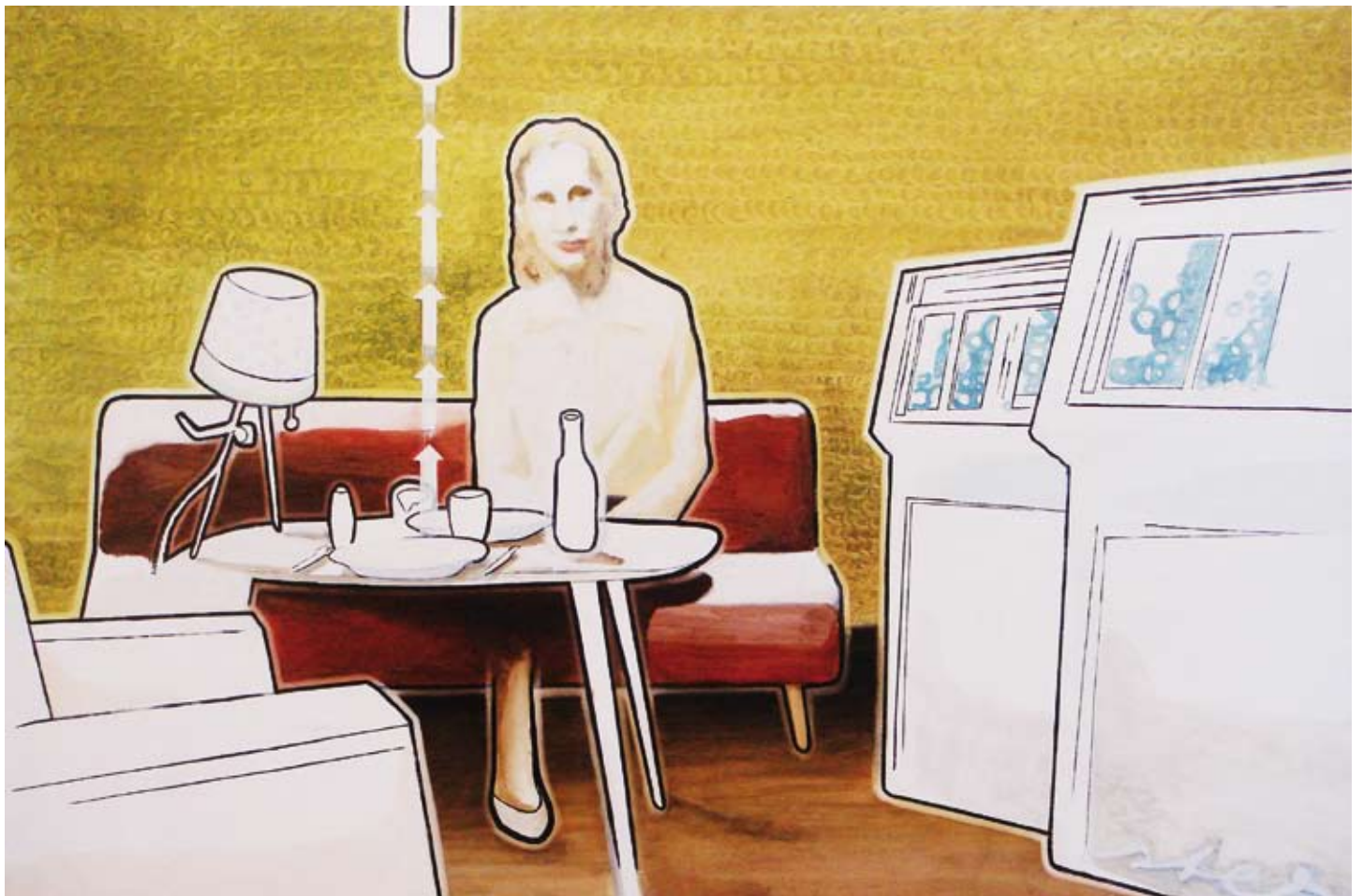
Ernst Blochs Schlafzimmer, 2010, oil and pigment pen on canvas, 170 x 220 cm



Volumen, 2009, oil and pigment pen on canvas, 210 x 330 cm



Black Coffee, 2009, oil and pigment pen on canvas, 60 x 80 cm



Stereoeffekt, 2006, oil and pigment pen on wood, 100 x 150 cm

TORSTEN RUEHLE

If as Gertrude Stein humorously observed 'there are no straight lines in nature', then Ruehle's art just as readily re-asserts that his paintings and black lines are not to be of nature but transpositions of a deliberately imagined and constructed world. As if to restate matters for the painter Ruehle, there is simultaneously clarity and ambiguous uncertainty that pervades and quite deliberately unnerves the immediate viewing experience of this artist's paintings. It is this very ambiguity and questioning dissonance that makes Torsten Ruehle's paintings so interesting. The persistent references to 'control' by Ruehle, are to be read intentionally as a form of deliberate irony.

Mark Gisbourne, Torsten Ruehle: Filter, 2009

- * 1975 born in Dresden
- * 1994 – 2000 studies in Dresden and Hamburg
- * 1998 foundation of artsociety eiland with Peter Ruehle und Daniel M Thureau
- * 2001 – 2004 project galerie oran, Dresden
- * 2003 – 2005 studies with Arno Rink, HGB Leipzig and Hanns Schimansky, KH Berlin - Weißensee
- * 2005 artist in residence, Backfabrik Berlin
- * 2007 grant Kunsthaus Lukas, Land Mecklenburg-Vorpommern
- * 2008 projekt CLEAR with Peter Ruehle
- * 2010 projekt GRACE with Peter Ruehle
- * lives and works in Berlin

SOLO EXHIBITIONS (selected)

- 2010 Berlin / Neue Räume / Galerie Kai Hilgemann
- 2009 Amsterdam / filter / 2x2projects
- 2008 Berlin / blue velvet / Galerie Kai Hilgemann
Greifswald / schmelz / Galerie Hubert Schwarz
- 2007 Mannheim / butterfly caught / Galerie Kasten
- 2006 Berlin / stereochrom / Galerie Stefan Denninger
Dresden / stereo / blitzgalerie
- 2005 Dresden / spezial / galerie oran
- 2004 Berlin / neu / Backfabrik
- 2003 Dresden / strom / galerie oran
- 2002 Dresden / nackte tatsachen / galerie oran
Florence / torsten ruehle / zoe
- 2001 Dresden / torsten ruehle / galerie oran

GROUP EXHIBITIONS (selected)

- 2009 Ahrenshoop / positionen / Neues Kunsthaus
Krefeld / clear table / Galerie Boergmann
Berlin / Berliner Blau / Galerie Kai Hilgemann
- 2008 Amsterdam / define the line / 2x2projects
Vienna / kg eiland / PPS
- 2007 Moers / radius / Kunstverein
Göttingen / nexus / Kunstverein Apex
Frankfurt a.M. / kg eiland / Kunstraum Bernusstraße
Chemnitz / kg eiland / Galerie Weise
Rome / kg eiland / German Embassy, Studio Marzi
Schwedt / kg eiland / Kunstverein
- 2006 Berlin / boulevardART / Kunstherbst Berlin
Berlin / stadtbilder / Galerie Stefan Denninger
- 2005 Berlin / kg eiand / Backfabrik
- 2004 Berlin / la dolce vita / Backfabrik

Vienna / sieben stunden malerei / Galerie Lang Wien
Chemnitz / kg eiland / Galerie Weise
2003 Dresden / transit / galerie oran
Berlin / economy and ecstasy / Raab Galerie
2002 Berlin / der kuss des schmetterlings / Wiener Werkstätten Kurfürstendamm
Dresden / der käfer im hotel / Kunsthalle im art'otel
2001 Hamburg / die blüten der zeit / Zeughaus
Köthen (Anhalt) / drogen, sex, geld / Altes Wasserwerk

ART FAIRS (selected)

2008, 09, 10 Kunst Zürich
2010 Art Amsterdam
2008, 09 Scope Basel
2007, 08, 09 Art Karlsruhe
2004, 05 Art Frankfurt

CATALOGUES

2003 kg eiland / 128 pages
2005 torsten ruehle / 68 pages
2008 CLEAR (with Peter Ruehle) / 96 pages
2009 FILTER / 96 pages

DANIEL M THURAU



Sick Warrior Princess, 2010, oil, acrylic, oil-crayon on canvas, 180 x 230 cm



Little Girl with Tie, 2008, oil on paper, 70 x 50 cm



Girl with Cigarette, 2008, oil on paper, 70 x 50 cm



Shiina Takako as Geisha Onayo of Gion, 2010, acrylic, oil-crayon on canvas, 100 x 80 cm



Sorrow, 2009, acrylic, crayon on canvas, 80 x 120 cm



Warrior Princess, 2009, acrylic, oil-crayon on canvas, 180 x 90cm



Landscape after Hiroshige, 2010, oil, acrylic on canvas, 180 x 90 cm



Kabuki Player, 2010, oil, acrylic on canvas, 180 x 130 cm



Uncle Eric's new Business, 2010, oil, acrylic, oil-crayon on canvas, 180 x 140 cm



Emmaus, 2010, oil, acrylic, oil-crayon on canvas, 140 x 180 cm

DANIEL M THURAU

Lessons in paint

You know there are writer's writers, musician's musicians and poet's poets. Daniel M Thureau is a painter's painter.

Influenced by German Expressionism, Thureau shaped a style of intense colours, which produce an artificially exaggerated reality with overreaching and sometimes apparently grotesque forms. By reacting to the non-figurative paintings by Albert Oehlen, the colour range of Henri Matisse, Vincent van Gogh and Frank Stella's dense and bright compositions he developed his own form of expression. His mostly figurative work shows elements often referring to comic-like figures.

Often Thureau uses randomly picked material be it from history, from the every-day life or from art-history as a footing to execute his extraordinary art on. His work also regularly reflects on the environment he is currently living in.

He produces intensive paintings, satiated with a strong will of expression provocatively direct in the treatment of themes spanning from love, death and sex to questions of humanity or the human condition itself. His latest works reflect on the life and death of England's Boxing Legend Jem Mace, as well as the disparate social changes in Eastern Germany where Thureau has been born.

But beside all the literary we should never forget that he in every single work consolidates the essential components of painting in a very disciplined and concentrated way: The drawing, the composition, the colour and eventually the gesture or handwriting of the painterly execution. The motive on the other hand serves him as an artefact and as the original motivation for his painting.

Paul-Christian van Leyden

* 1974 born in East Germany

* 1998 founder of artists group kunstgesellschaft eiland together with painters Peter and Torsten Rühle

* 2004 Artist in Residence, Backfabrik Berlin

* 2008 / 2009 MA Drawing, Norwich University College of the Arts, Norwich / U.K.

* since 2010 Master's student of Werner Büttner at HFBK Hamburg

* lives in Berlin

EXHIBITIONS (SELECTED)

2010 Wien / Marc Frantz: Meine Japanreise / Galerie Lang Wien (solo)

Karlsruhe / art Karlsruhe / Galerie Kasten

Berlin / Abakus / fly art projects

Wien / Human Being / Galerie Lang Wien

2009 Berlin / Urban Affairs extended - Le Grand Poolais / Stattbad Wedding

Wien / You've come a long Way, Baby / Galerie Lang Wien (solo)

Norwich / In Transit / Stew Gallery

Wien / Vienna Fair / Galerie Lang Wien

Karlsruhe / art Karlsruhe / Galerie Kasten

2008 Wien / Berlin Calling / P.P.S.Galleryspace Wien

Miami /scope artfair / artMbassy Berlin

Rom / 4 Cantoni / Gallery Pancaldi

Karlsruhe / art Karlsruhe / Galerie Kasten

Rom / Studio Marzi / Deutsche Botschaft

2007 Wien / ViennaFair / Galerie Lang Wien

Chemnitz / kg eiland / Galerie Weise

Göttingen / Nexus / Apex Kunstverein

Karlsruhe / art karlsruhe / Galerie Kasten

Frankfurt / kg eiland / Kunstraum Bernusstrasse

2006 Wien / Europas Traum / Galerie Lang Wien (solo)

Berlin / stichpimpulibockforcelorum / Galerie Stefan Denninger

Heidelberg / Landschaft / Kunstverein

Wien / ViennaFair / Galerie Lang Wien

- Frankfurt a.M. / Kunstraum Bernusstraße / Galerie Kasten
Mannheim / Hängen Sie sich Bilder an die Wände / Galerie Kasten
Karlsruhe / art karlsruhe / Galerie Lang Wien
- 2005 Frankfurt a.M. / Herbstdialog / Ausstellungshalle
Berlin / kg eiland / Backfabrik
Wien / Vienna Fair / Galerie Lang Wien
Frankfurt a.M. / art frankfurt / Galerie Lang Wien
- 2004 Wien / Königinnen / Galerie Lang Wien (solo)
Halle S. / Große Kunstausstellung / Villa Kobe
Frankfurt a.M. / art frankfurt / Galerie Lang Wien
Wien / Ostblockbuster (sieben Stunden Malerei) / Institut francais
- 2003 Dresden / Jetzt / Galerie Oran
Berlin / Economy and Ecstasy / Raab-Galerie
Berlin / Kollektionswechsel / Project Space IC-Berlin
- 2002 Dresden / Morphio / Galerie Oran, mit Sebastian Hempel
Leipzig / visualia / mitgas-hv
Trient / la luna grassa sogghinante / Centro Polifunzionale
Dresden / Der Käfer im Hotel / Kunsthalle art'otel
- 2001 Hamburg / Die Blüten der Zeit / Zeughaus Altona
Berlin / Mama is gone / Kunsthaus Tacheles (solo)